

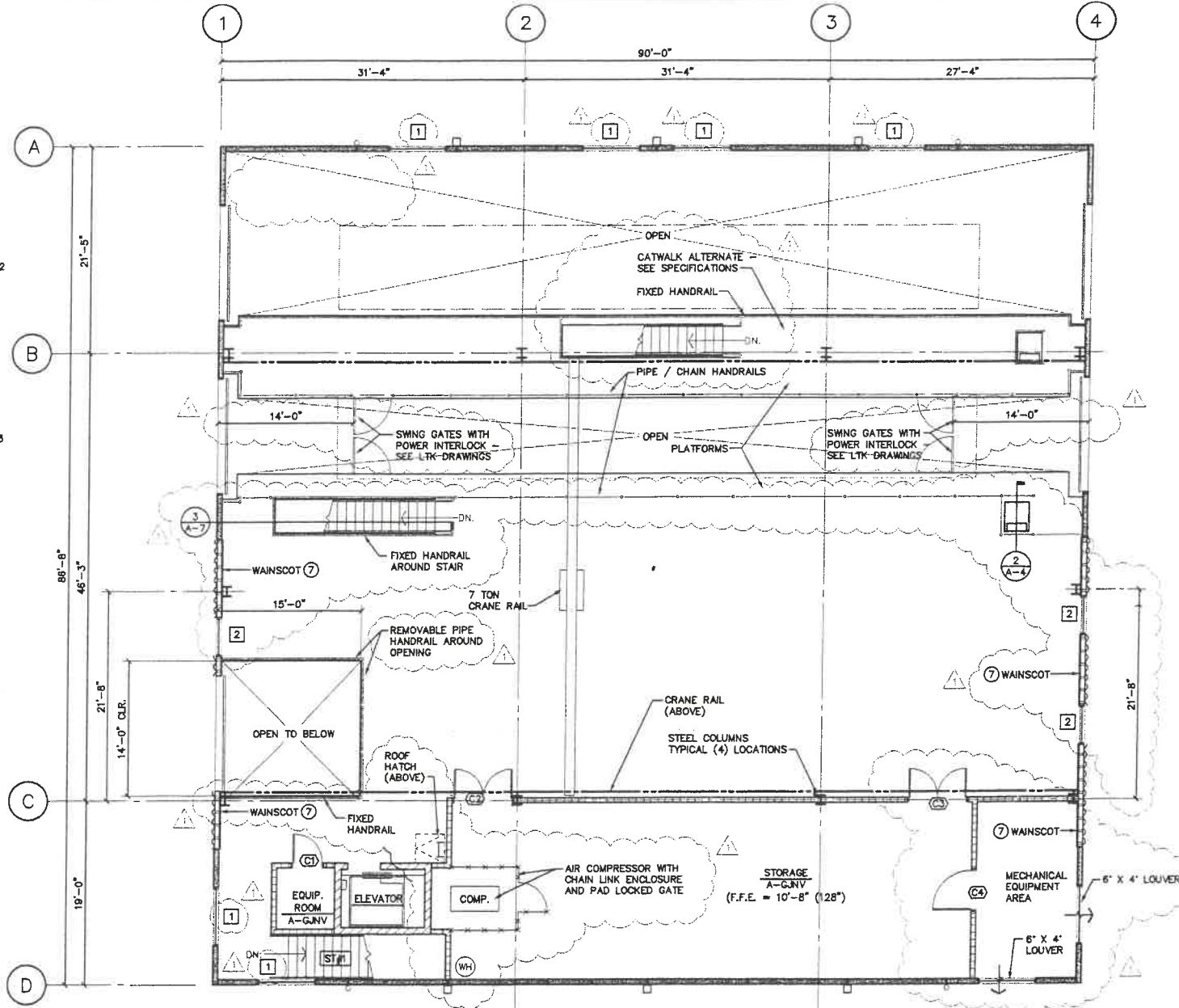
FIRST FLOOR PLAN

7,800 SQ. FT.

WALL LEGEND

- INDICATES C.M.U. (CONCRETE MASONRY UNIT OR BLOCK) WALL SIZE AS NOTED ON PLANS OR DETAILS
 - INDICATES 6" METAL STUD WALL WITH 1/2" PLYWOOD SHEATHING AND METAL SIDING PER SPECIFICATIONS. INSULATE WITH R-19 BATT INSULATION.
 - INDICATES 6" METAL STUD WALL WITH 5/8" GYPSUM SHEATHING BOTH SIDES. INSULATE WITH R-19 BATT INSULATION
 - INDICATES 4" METAL STUD WALL WITH 5/8" GYPSUM SHEATHING BOTH SIDES. INSULATE WITH R-11 BATT INSULATION
 - INDICATES INSULATED CONCRETE TILT PANELS.
 - INDICATES INSULATED CONCRETE TILT PANELS WITH 3 1/2" METAL STUDS AT 16" O.C. WITH 5/8" GYP. BD. (R-11 BATT INSULATION)
- NOTES:**
- R-11 INSULATION AT RESTROOM WALLS OR AS NOTED. (SEE SPECIFICATIONS) (R-19 INSUL. AT 6" STUD WALLS).
 - IF CONTRACTOR OPTS TO USE METAL STUDS INSTEAD OF WOOD STUDS (AS NOTED AND DETAILED), HE MUST NOTIFY ENGINEER FOR GAUGE REQUIRED AND ADDITIONAL DETAILS.
 - ALL GYPSUM BOARD MUST BE TYPE "X" AT RATED WALLS.

DOOR SIZE	DOOR TYPE	FRAME	TYPE	MATL	TYPE	MATL	LABEL	REMARKS
A1 3'-0" X 7'-0"	B	AL	1	AL	B2	C2 D1 D81 P1	-	ALUMINUM STOREFRONT
A10 12'-0" X 18'-0"	C	STL	2	STL	ROLL UP DOOR	-	-	INSULATED, MOTOR OPERATED
A2 3'-0" X 7'-0"	A	STL	1	STL	B2 C1 D1 L1 T1 S1	-	-	-
A3 4'-0" X 7'-0"	A	H.C.M.	1	H.M.	B2 C1 D1 L1 T1 S1	-	-	-
A4 12'-0" X 12'-0"	C	STL	2	STL	ROLL UP DOOR	-	-	INSULATED, MOTOR OPERATED
A5 3'-0" X 7'-0"	A	H.C.M.	1	H.M.	B2 C1 D1 L1 T1 S1	-	-	-
A6 12'-0" X 18'-0"	C	STL	2	STL	ROLL UP DOOR	-	-	INSULATED, MOTOR OPERATED
A7 12'-0" X 18'-0"	C	STL	2	STL	ROLL UP DOOR	-	-	INSULATED, MOTOR OPERATED
A8 3'-0" X 7'-0"	A	H.C.M.	1	H.M.	B2 C1 D1 L1 T1 S1	-	-	-
A9 12'-0" X 18'-0"	C	STL	2	STL	ROLL UP DOOR	-	-	INSULATED, MOTOR OPERATED
B1 3'-0" X 7'-0"	D	H.C.M.	1	H.C.M.	B1 C1 L6 S2 W1	-	-	-
B10 3'-0" X 7'-0"	D	H.C.M.	1	H.C.M.	B1 L6 S2	-	-	-
B11 4'-6" X 7'-0"	D	H.C.M.	1	H.C.M.	B1 L6 S2	-	-	-
B2 3'-0" X 7'-0"	D	S.C.B.	1	H.C.M.	B1 L6 S2	-	-	-
B3 3'-0" X 7'-0"	D	S.C.B.	1	H.C.M.	B1 L6 S2	-	-	-
B4 3'-0" X 7'-0"	D	S.C.B.	1	H.C.M.	B1 L6 S2	-	-	-
B5 3'-0" X 7'-0"	D	H.C.M.	1	H.C.M.	B1 C1 L6 S2	-	-	-
B6 3'-0" X 7'-0"	D	H.C.M.	1	H.C.M.	B1 C1 L7 S2	-	-	-
B7 3'-0" X 7'-0"	A	H.C.M.	1	H.C.M.	B1 C1 K1 P2 S1	-	-	-
B8 3'-0" X 7'-0"	A	H.C.M.	1	H.C.M.	B1 C1 K1 P2 S1	-	-	-
B9 3'-0" X 7'-0"	D	H.C.M.	1	H.C.M.	B1 L6 S2	-	-	-
C1 3'-0" X 7'-0"	A	H.C.M.	1	H.M.	B1 L6 S1	-	-	-
C2 PR 3'-0" X 7'-0"	A	H.C.M.	1	H.M.	B1 L6 S1	-	-	T&B FLUSH BOLTS INACTIVE LEAF
C3 PR 3'-0" X 7'-0"	A	H.C.M.	1	H.M.	B1 L6 S1	-	-	T&B FLUSH BOLTS INACTIVE LEAF
C4 4'-0" X 7'-0"	A	H.C.M.	1	H.M.	B1 C1 L7 S1	-	-	-



MEZZANINE FLOOR PLAN

5,100 SQ. FT.

FINISH SCHEDULE:

- FLOOR FINISH**
- A - EXPOSED CONCRETE SLAB (SEALER)
 - B - CARPET (CPT.)
 - C - SHEET VINYL (S.V.)
 - D - VINYL COMPOSITION TILE (V.C.T.)
 - E - RUBBER TREADS AND RISERS
- BASE**
- 0 - NONE
 - 4 - 4" RUBBER BASE
 - 6 - 6" RUBBER BASE
- WALLS**
- G - CONCRETE MASONRY UNIT (CMU) AND PAINT
 - H - EXPOSED CONCRETE AND PAINT
 - J - GYPSUM BOARD AND PAINT
 - K - 4'-0" HIGH PLASTIC LAMINATE WAINSCOT WITH GYPSUM BOARD ABOVE
 - L - EPOXY PAINT AT TOILET ROOMS
- CEILING**
- N - EXPOSED ROOF STRUCTURE
 - P - SUSPENDED ACoustICAL TILE - SEE SPEC.
 - Q - GYPSUM BOARD AND PAINT
- CEILING HEIGHT**
- 8 - 8'-0"
 - 9 - 9'-0"
 - 10 - 10'-0"
 - V - VARIES

GENERAL NOTES:

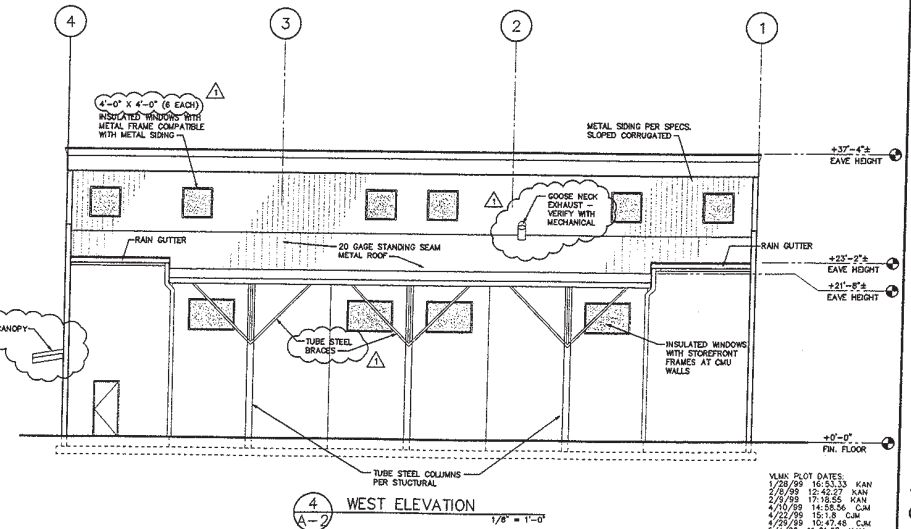
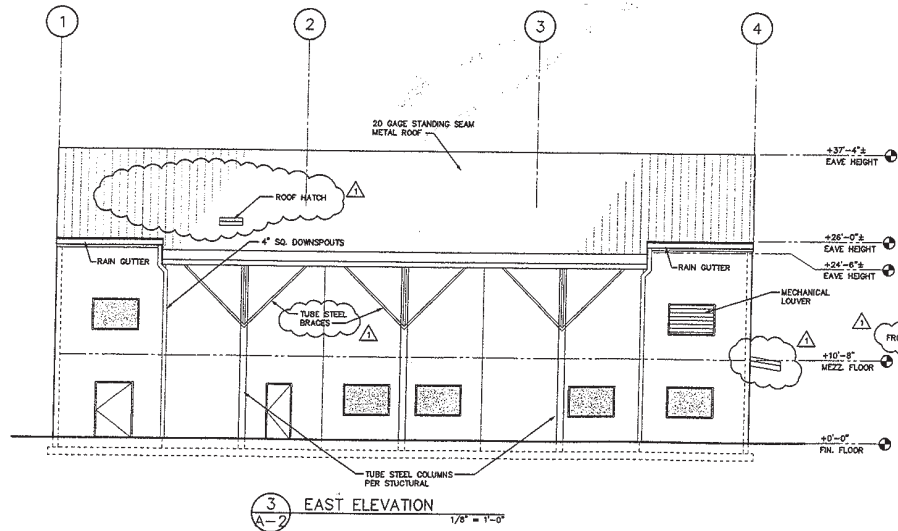
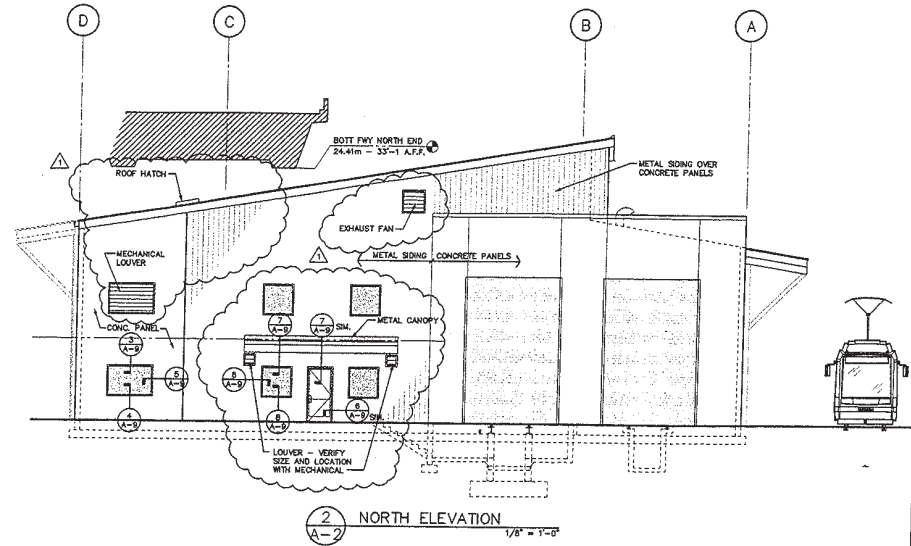
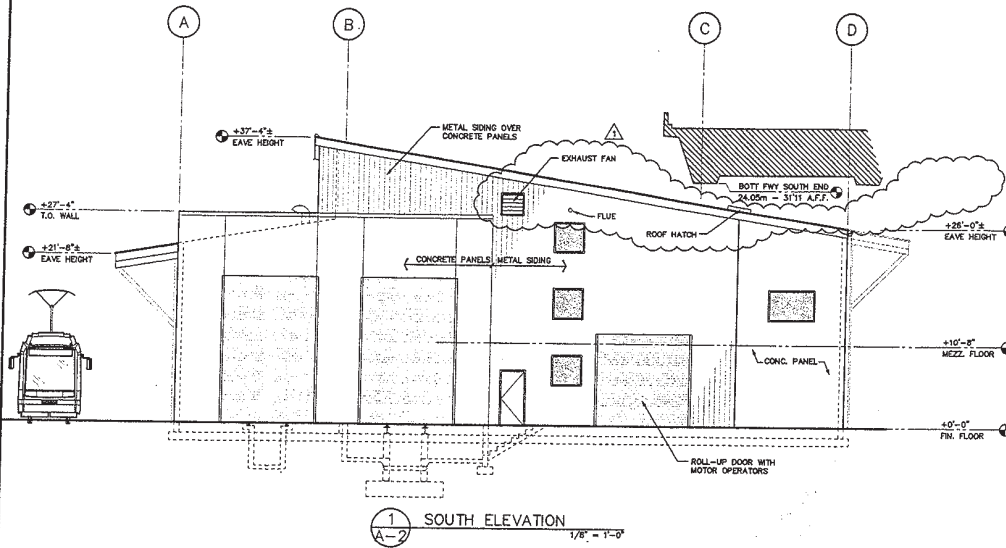
- SEE FOUNDATION PLANS FOR ADDITIONAL DIMENSIONS OF ALL OPENINGS (DOORS, ETC.) THAT ARE NOT SHOWN.
- VERIFY ALL UTILITY LOCATIONS AT EXIT FROM BUILDING WITH MECHANICAL CONTRACTOR. COORDINATE ALL INTERIOR AND EXTERIOR UTILITY LOCATIONS PRIOR TO CONSTRUCTION.
- SEE SITE PLAN (G-1) FOR ADDITIONAL INFORMATION ON ITEMS THAT ARE SHOWN OUTSIDE OF BUILDING (WALKS, PARKING, ETC.).
- DIMENSIONS TAKE PRECEDENCE OVER DRAWING. DO NOT SCALE DRAWINGS TO DETERMINE ANY LOCATIONS. THE ENGINEER SHALL BE NOTIFIED IF ANY DISCREPANCY OCCURS, PRIOR TO CONTINUING WITH WORK.
- ALL DIMENSIONS ON PLANS ARE FROM THE OUTSIDE FACE OF EXTERIOR WALLS AND CENTERLINE OF INTERIOR WALLS UNLESS OTHERWISE NOTED.
- FIXED HANDRAIL / GUARDRAIL - 1 1/2" STANDARD PIPE 42" HIGH WITH (2) INTERMEDIATE RAILS AND SUPPORTS AT 6'-0" O.C. MINIMUM.
- PLYWOOD WAINSCOT AT INSIDE FACE OF EXTERIOR STUD WALLS 5/8" MDG PLYWOOD 8'-0" HIGH (A.F.F.). CONNECT WITH FINISH SCREWS PATCH HOLES. PAINT WHITE.
- PIT STAIR HANDRAILS STOP FLUSH WITH SLAB PER DETAILS
- PIPE/CHAIN HANDRAILS EACH SIDE OF PITS. 1 1/2" DIA. PIPE (REMOVABLE) WITH CHAIN LINK WELDED AT TOP. 1" X 3/16" CHAIN BETWEEN POSTS WITH DOG LEASH CLIP EACH END

VLK PLOT DATES:	
1/28/99	16:43.29 KAN
2/8/99	17:45.13 RD
2/8/99	18:03.31 KAN
4/10/99	17:9.14 CUM
4/22/99	15:0.36 CUM
4/25/99	10:47.6 CUM
5/4/99	11:40.34 KAN
5/6/99	9:36.47 KAN
6/10/99	6:43.20 KAN
6/16/99	17:37.58 KAN
8/23/99	11:6.20 KAN

98340A-1.dwg

2/23/99 PLAN CHECK REVISIONS NO. DATE DESCRIPTION APPD.		CONSTRUCTED BY PROJECT COMPLETED MAP CORRECTED BY DATA ENTERED ON 1/4 SEC.MAP BY DATA ENTERED ON DIST.MAP BY		DESIGNED BY TC DRAWN BY KAN CHECKED BY JTB		DATE APPROVED DIV. ENGINEER -		APPROVALS: PRINCIPAL ENGINEER REG. PROF. ENGR. NO. CITY ENGINEER REG. PROF. ENGR. NO. 14348		CITY OF PORTLAND, OREGON PORTLAND OFFICE OF TRANSPORTATION CHARLIE HALES BRANT WILLIAMS, P.E.		COMMISSIONER CITY ENGINEER		VLK Consulting Engineers 3833 S.W. Kelly Avenue Portland, Oregon 97201 (503) 222-4453 fax 248-9263		REGISTERED PROFESSIONAL ENGINEER 8020 JULY 16, 1991 ALFRED H. VAN DOMMEN		CENTRAL CITY STREETCAR MAINTENANCE BUILDING AND YARD N.W. 15TH TO 16TH AVENUE N.W. LOVEJOY, MARSHALL & NORTHRUP ST. FLOOR PLANS Portland Streetcar Inc.		1/4 SECTION 2927 JOB NO. 98340 SHEET NO. A 1	
--	--	--	--	---	--	-------------------------------------	--	---	--	---	--	-------------------------------	--	---	--	---	--	--	--	---	--

PLAN CHECK REVISIONS - 8/24/99



VLMX PLOT DATES:
 1/28/99 16:53.33 KAN
 2/8/99 15:42.27 KAN
 2/8/99 17:18.25 KAN
 2/10/99 14:56.54 C.M.
 2/22/99 15:19 C.M.
 2/1/99 11:21.57 KAN
 2/1/99 15:21.8 C.M.
 2/10/99 9:33.30 KAN
 2/10/99 17:38.56 KAN

98340A-2.dwg

NO. DATE 8/15/99 MAIN PERMIT SET REVISIONS		DESCRIPTION REVISION		APPD. FINAL MAP DATA		DESIGNED BY PROJECT COMPLETED MAP CORRECTED BY DATA ENTERED ON 1/4 SEC. MAP BY CHECKED BY DATA ENTERED ON DIST. MAP BY CHECKED BY		TC DRAWN BY KAN CHECKED BY JTB		DATE APPROVED DIV. ENGINEER NO.		APPROVALS: PRINCIPAL ENGINEER REG. PROF. ENGR. NO.		CITY ENGINEER REG. PROF. ENGR. NO. 14346		CITY OF PORTLAND, OREGON PORTLAND OFFICE OF TRANSPORTATION CHARLIE HALE BRANT WILLIAMS, P.E.		COMMISSIONER CITY ENGINEER		VLMX Consulting Engineers 3933 S.W. Kelly Avenue Portland, Oregon 97201 (503)222-4453 fax 246-9283		REGISTERED PROFESSIONAL ENGINEER 0250 KAN 6-30-00		CENTRAL CITY STREETCAR MAINTENANCE BUILDING AND YARD N.W. 15TH TO 16TH AVENUE N.W. LOVEJOY, MARSHALL & NORTHRUP ST. BUILDING ELEVATIONS Portland Streetcar Inc.		1/4 SECTION 2927 JOB NO. 98340 SHEET NO. A 2 of	
---	--	-------------------------	--	-------------------------	--	---	--	--	--	---------------------------------------	--	--	--	---	--	--	--	-------------------------------	--	--	--	---	--	--	--	--	--

MAIN PERMIT SET REVISIONS - 6-16-99